



MODELLARIO

DENNY ROSE

EVENING COLLECTION 2014/15

ART. 51DR12002

C/C 8259

Tg: 40-42-44-46-48

(Jacquard)



var. 01

ART. 51DR12003

C/C 8260

Tg: 40-42-44-46-48

(Jersey + rete)



col. 2001

MADE IN ITALY

ART. 51DR12004

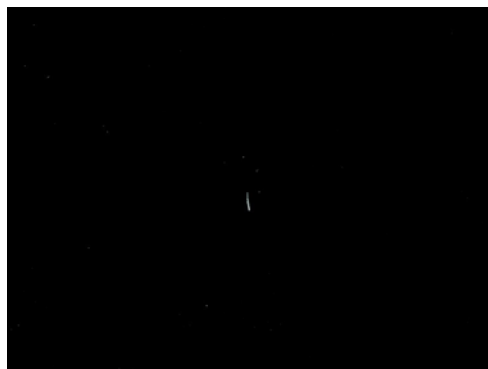
C/C 8261

Tg: 40-42-44-46-48

(Cadi)



col.2488



col.2001

ART. 51DR12005

C/C 8263

Tg: 40-42-44-46-48

(Ottoman + georgette)



col.2001

MADE IN ITALY

ART. 51DR12006

C/C 8264

Tg: 40-42-44-46-48

(Scuba)



col.2001



col.3401

ART. 51DR12007

C/C 8265

Tg: 40-42-44-46-48

(Tessuto tecnico)



var.01

MADE IN ITALY

ART. 51DR12008

C/C 8266

Tg: 40-42-44-46-48

(Duchesse)



var.01

ART. 51DR12009

C/C 8267

Tg: 40-42-44-46-48

(Tessuto fluido + tulle con borchie)



col.2001

MADE IN ITALY

ART. 51DR12010

C/C 8269

Tg: 40-42-44-46-48

(Crèpe + paillettes)



col.2001

ART. 51DR12011

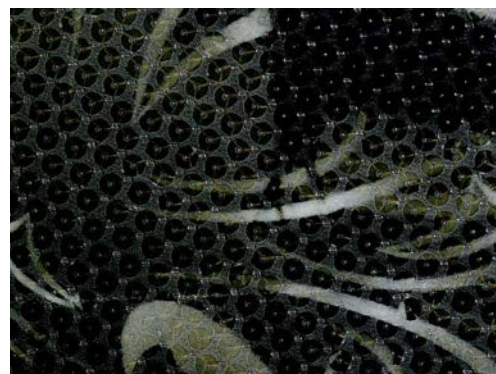
C/C 8270

Tg: 40-42-44-46-48

(Paillettes stampate)



var.02



var.01

MADE IN ITALY

ART. 51DR12012

C/C 8271

Tg: 40-42-44-46-48

(Jersey con borchiette)



col.2001

ART. 51DR12013

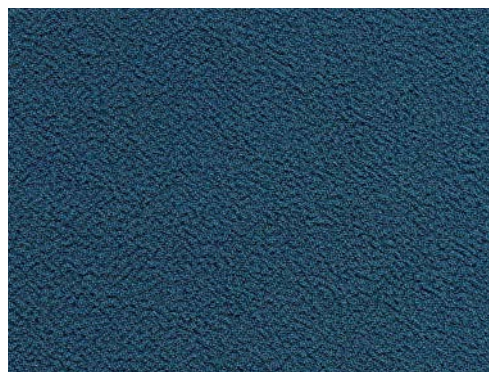
C/C 8283

Tg: 40-42-44-46-48

(Crèpe)



col.2001



col.2904

MADE IN ITALY

ART. 51DR12014

C/C 8257

Tg: 40-42-44-46-48

(Abito fantasia)



var.01

ART. 51DR12015

C/C 8258

Tg: 40-42-44-46-48

(Jacquard + georgette)



var.01

MADE IN ITALY

ART. 51DR12016

C/C 8276

Tg: 40-42-44-46-48

(Pizzo + taffeta)



col.2466

ART. 51DR12017

C/C 8280

Tg: 40-42-44-46-48

(Stampa macula + tulle)



var.01

MADE IN ITALY

ART. 51DR12018

C/C 8282

Tg: 40-42-44-46-48

(Jersey fluido)



col.2001

ART. 51DR12019

C/C 8271

Tg: 40-42-44-46-48

(Jersey pesante)



col.2001

MADE IN ITALY

ART. 51DR12020

C/C 8281

Tg: 40-42-44-46-48

(Scozzese)



var.01

ART. 51DR12021

C/C 8278

Tg: 40-42-44-46-48

(Raso stampato)



var.01

MADE IN ITALY

ART. 51DR12022

C/C 8261

Tg: 40-42-44-46-48

(Cadi)



col.2001

ART. 51DR22000

C/C 8268

Tg: 40-42-44-46-48

(Tessuto fluido)



col.2001

MADE IN ITALY

ART. 51DR22001

C/C 8262

Tg: 40-42-44-46-48

(Cadi)



var.01

ART. 51DR22002

C/C 8275

Tg: 40-42-44-46-48

(Pizzo doppiato)



col.2001

MADE IN ITALY

ART. 51DR22003

Tg: 40-42-44-46-48

(Cadi)

C/C 8261



col.2001

ART. 51DR22004

Tg: 40-42-44-46-48

(Tessuto oro)

C/C 8279



var.01

MADE IN ITALY

ART. 51DR22005

C/C 8279

Tg: 40-42-44-46-48

(Tessuto oro)



var.01

ART. 51DR32000

C/C 8279

Tg: 40-42-44-46-48

(Tessuto oro)



var.01

MADE IN ITALY

ART. 51DR42000

C/C 8284

Tg: XS-S-M-L-XL

(Tessuto fluido)



col.2001

ART. 51DR42001

C/C 8281

Tg: XS-S-M-L-XL

(Ecopelle + scozzese)



var.01

MADE IN ITALY

ART. 51DR42002

C/C 8286

Tg: XS-S-M-L-XL

(Popeline)



col.2100

ART. 51DR52000

C/C 8287

Tg: XS-S-M-L-XL

(Maglia con frange)



col.2054

MADE IN ITALY

ART. 51DR52001

C/C 8288

Tg: XS-S-M-L-XL

(Maglia lamè)



col.2054



col.2704

ART. 51DR52002

C/C 8292

Tg: XS-S-M-L-XL

(Scialle in maglia)



var.02



var.01

MADE IN ITALY

ART. 51DR52003

C/C 8291

Tg: XS-S-M-L-XL

(Maglia)



col.2001

ART. 51DR52004

C/C 8290

Tg: XS-S-M-L-XL

(Maglia)



var.01

MADE IN ITALY

ART. 51DR52005

C/C 8289

Tg: XS-S-M-L-XL

(Maglia)



col.2001

ART. 51DR62000

C/C 8260

Tg: XS-S-M-L-XL

(Jersey + rete)



col.2001

MADE IN ITALY

ART. 51DR62001

C/C 8272

Tg: XS-S-M-L-XL

(Jersey + tulle)



col.2001

ART. 51DR62002

C/C 8273

Tg: XS-S-M-L-XL

(Rete operato + georgette)



var.01

MADE IN ITALY

ART. 51DR62003

C/C 8274

Tg: XS-S-M-L-XL

(Scuba + georgette)



var.01

ART. 51DR62004

C/C 2872

Tg: XS-S-M-L-XL

(Jersey)



col.2001



col.2102

MADE IN ITALY

ART. 51DR62005

C/C 8272

Tg: XS-S-M-L-XL

(Jersey + georgette)



col.2001

ART. 51DR62006

C/C 8272

Tg: XS-S-M-L-XL

(Jersey + tulle)



col.2001

MADE IN ITALY

ART. 51DR62007

Tg: XS-S-M-L-XL

(Jersey)

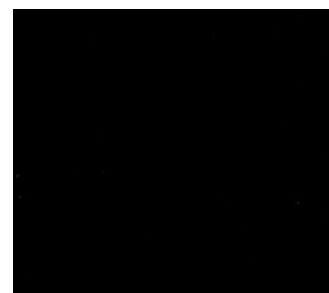
C/C 8272



col.2423



col.2102



col.2001

ART. 51DR62008

Tg: XS-S-M-L-XL

(Jersey)

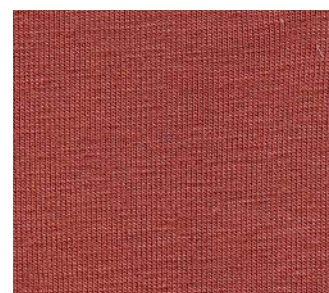
C/C 8272



col.2001



col.2102



col.2423

MADE IN ITALY

ART. 51DR62009

C/C 8285

Tg: XS-S-M-L-XL

(Jersey + rete)



col.2001

ART. 51DR62010

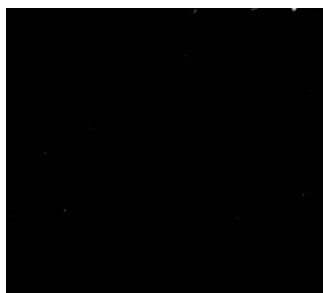
C/C 8272

Tg: XS-S-M-L-XL

(Jersey)



col.2102



col.2001



col.2423

MADE IN ITALY

ART. 51DR62011

C/C 8272

Tg: XS-S-M-L-XL

(Jersey)



col.2001



col.2423

ART. 51DR62012

C/C 8272

Tg: XS-S-M-L-XL

(Jersey)



col.2001

MADE IN ITALY

ART. 51DR62013

C/C 8272

Tg: XS-S-M-L-XL

(Jersey)



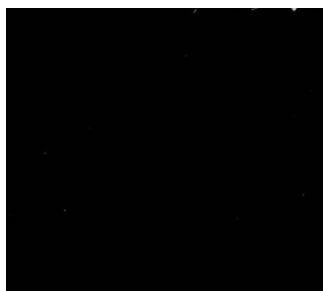
col.2001

ART. 51DR62014

C/C 8272

Tg: XS-S-M-L-XL

(Jersey)



col.2001

col.2423

MADE IN ITALY

ART. 51DR62015

C/C 8285

Tg: XS-S-M-L-XL

(Jersey + rete)



col.2001

col.2423

ART. 51DR62016

C/C 8272

Tg: XS-S-M-L-XL

(Jersey + tulle)



col.2001

MADE IN ITALY

ART. 51DR62017

C/C 8272

Tg: XS-S-M-L-XL

(Jersey)



col.2001

ART. 51DR72000

C/C 8263

Tg: 40-42-44-46-48

(Georgette)



col.2001

MADE IN ITALY

ART. 51DR72001

C/C 8277

Tg: 40-42-44-46-48

(Taffetà)



col.2649



col.2001



col.2413



col.2912

ART. 51DR72002

C/C 8275

Tg: 40-42-44-46-48

(Pizzo)



col.2001

MADE IN ITALY

ART. 51DR72003

C/C 8266

Tg: 40-42-44-46-48

(Duchesse)



var.01

ART. 51DR72004

C/C 8261

Tg: 40-42-44-46-48

(Cadi)



col.2001



col.2488

MADE IN ITALY

ART. 51DR92000

C/C 8293

Tg: XS-S-M-L

(Ecopelle)



col.2001

col.2462

ART. 51DR92001

C/C 8294

Tg: XS-S-M-L

(Ecopelle)



col.2001

MADE IN ITALY

ART. 51DR92002

C/C 8295

Tg: 40-42-44-46-48

(Duchesse)



col.2001

MADE IN ITALY

GUIDA ALLE TAGLIE/SIZE GUIDE

TABELLA DELLE EQUIVALENZE/ EQUIVALENCE TABLE

BLAZER/CAMICIE/VESTITI/GIUBBOTTI/T-SHIRT/FELPE/MAGLIERIA BLAZER/SHIRT/DRESS/JACKET/T-SHIRT/FLEECE/KNITWEAR									
EUROPE	36/XS	38/S	40/M	42/L	44/XL	46/XXL			
UK	8	10	12	14	16	18			
IT	40	42	44	46	48	50			
USA	4	6	8	10	12	14			
CHINA	S	M	L	XL	XXL				

DENNY ROSE®

Distribuito da Gaudi Trade S.p.a
Via Nuova Ponente n° 29, 41012 Carpi (Modena)
Tel. 059-671277 - Fax 059-696516
www.gaudi.it - info@gauditrade.com