



# WINTER 2013



# kuoma®

Winter shoes for the whole family

[www.kuoma.fi](http://www.kuoma.fi)



Kuoma® - shoes are light and extremely warm Finnish boots for winter use.



The sturdy, durable, flexible, thermally insulating PU outsole is moulded directly on to the upper to bond better than a glued outsole. Although the sole may be slippery when new or in difficult conditions, grip improves after brief wear.



Elastic heel counter is bonded straight on to the outsole for heel support.

All models feature durable reinforcements impregnated against damp.

Double stitching is used to provide extra strength in seams subject to tough wear and tear.



There are 3M-Scotchlite® reflective strips in front and back for extra safety.

Under surface material there is a layer of thermal insulation foam with closed cell structure to prevent water absorption (product dries quickly).



Inside the boot there is a clear size label with space for name (children's models).

The surface material is hardwearing and has good moisture and dirt repellent properties thanks to Nuva® - treatment.

Models made of textile are machine and hand washable. Washing and drying temperature 40 Cmax.



The warm, removable insole has rough under surface to prevent "rolling" under the foot.

The inner lining is made of quality pile which is warm and durable.

**kuoma®**  
Made in Finland



**Kuomiokoski Oy**

Pohjallistie 1

FIN-52780 Kuomiokoski, FINLAND

Tel. +358 (0) 15 4151 100

Fax. +358 (0) 15 4181 25

[kuoma@kuomiokoski.fi](mailto:kuoma@kuomiokoski.fi)

[export@kuomiokoski.fi](mailto:export@kuomiokoski.fi)

[www.kuoma.fi](http://www.kuoma.fi)



Boots and ankle boots for children have a last formed for children's feet. Almost all models have warm pile lining and reflective strips, changeable felt insole. Most of the children's models have water and dirt repellent PU coated split leather reinforcements. The boots can be washed and dried in max +40 C.

## CHILDREN'S PUTKIVARSI



**Black Owl**  
1203 0362 Sizes: 20-39



**Neon yellow Owl**  
1203 6562 Sizes: 20-39



**Neon pink Owl**  
1203 6662 Sizes: 20-39



**Black Tractor**  
1203 0363 Sizes: 20-39



**Black**  
1203 03 Sizes: 20-39



**Blue**  
1203 01 Sizes: 20-39



**Red**  
1203 04 Sizes: 20-39



**Bordeaux**  
1203 08 Sizes: 20-39



**Black Woodgrain**  
1203 0355 Sizes: 20-39



**Cyclamen**  
1203 48 Sizes: 20-39



**Red Point**  
1203 0464 Sizes: 20-39



**Pink Big Square**  
1203 3752 Sizes: 20-39



**Black Ghost**  
1203 0337 Sizes: 20-39



**Cyclamen Flower**  
1203 4826 Sizes: 20-39



**Bordeaux Flower**  
1203 0826 Sizes: 20-39



**Black Big Square**  
1203 0352 Sizes: 20-39

## CHILDREN'S Lumi Eskimo

Snowlock



**Black**  
1205 03 Sizes: 20-39



**Bordeaux**  
1205 08 Sizes: 20-39



**Cyclamen**  
1205 48 Sizes: 20-39



**Black**  
1209 03 Sizes: 20-39

## CHILDREN'S Silver Eskimo

Snowlock

CHILDREN'S

# Tarravarsi

Velcro fastener on the side of the boot



**Black**  
1211 03 Sizes: 20-35



**Blue**  
1211 01 Sizes: 20-35



**Red**  
1211 04 Sizes: 20-35



**Bordeaux**  
1211 08 Sizes: 20-35



**Cyclamen**  
1211 48 Sizes: 20-35



**Black Ghost**  
1211 0337 Sizes: 20-35



**Neon pink Owl**  
1211 6662 Sizes: 20-35



**Black Owl**  
1211 0362 Sizes: 20-35



**Neon yellow Owl**  
1211 6562 Sizes: 20-35





CHILDREN'S  
**Rocky**

*Snowlock*



**Black**

1707 03 Sizes: 20-35

CHILDREN'S  
**Pörri**

*Artificial fur decoration*



**Black**

1206 03 Sizes: 20-39



**Bordeaux**

1206 08 Sizes: 20-39

# Felt Boots

Kuoma felt boots combine warm pure lamb's wool felt and light, durable PU sole to valenki extremely suitable for today's conditions. They have warm and breathable wool insole for extra comfort. Kuoma felt boots have water repellent reinforcements. Thanks to the high density of good quality wool felt Kuoma valenki are both breathable and water repellent, and they keep your feet warm even in harsh winter temperatures.

Wool felt used by Kuoma is antimicrobial, water repellent and it conforms to the requirements of Öko-Tex 100 standard.



## LADIES' Tsaaritar



**Black**  
1504 03 Sizes: 36-42

## LADIES' Runo



**White**  
1503 13 Sizes: 36-42



**Black**  
1503 03 Sizes: 36-42



**Red**  
1503 04 Sizes: 36-42

## CHILDREN'S Otso



**Black**  
1502 03 Sizes: 23-35



**White**  
1502 13 Sizes: 23-35



**Red**  
1502 04 Sizes: 23-35

## MEN'S Ukko



**Black**  
1505 03 Sizes: 36-49





**CHILDREN'S  
Baby**

*Easy to put on for small children, zipper fastener*



**Blue Cats**  
1241 0109 Sizes: 19-24



**Pink Bunny**  
1241 5946 Sizes: 19-24



**Cyclamen Cats**  
1241 4809 Sizes: 19-24



**Pink Glitter**  
1241 5967 Sizes: 19-24

**CHILDREN'S  
Crosser**

*Velcro fastener*



**Black**  
1260 20 Sizes: 22-35



**Red**  
1260 17 Sizes: 22-35



**Bordeaux**  
1260 22 Sizes: 22-35



**Blue**  
1260 19 Sizes: 22-35

**CHILDREN'S  
Daniel**

*Split leather reinforcement*



**Black/Orange**  
1927 58 Sizes: 23-35



**Black/Silver**  
1927 63 Sizes: 23-35

**CHILDREN'S  
Madeleine**

*Suede reinforcement*



**Fuxia**  
1925 40 Sizes: 23-35

**CHILDREN'S  
Tirol**

*Velcro fastener*



**Black**  
1915 20 Sizes: 28-40



**Blue**  
1915 19 Sizes: 28-40



**Bordeaux**  
1915 22 Sizes: 28-40



**Green**  
1915 21 Sizes: 28-40

**CHILDREN'S AND LADIES' Glamour**  
Stitched textile, suede reinforcements



**Black**  
1406 03 Sizes: 30-42



**Gray**  
1406 11 Sizes: 30-42

**CHILDREN'S AND LADIES' Elle**  
Artificial fur decoration, suede reinforcements



**White**  
1410 13 Sizes: 23-42



**Black**  
1410 03 Sizes: 23-42

**CHILDREN'S AND LADIES' Gloria**  
Artificial fur decoration, suede reinforcements



**Violet**  
1407 02 Sizes: 23-42



**Black**  
1407 03 Sizes: 23-42



**Pink**  
1407 57 Sizes: 23-42



**Purple**  
1407 56 Sizes: 23-42



**Lady**  
PU coated split leather reinforcements



**Bordeaux**  
1403 08 Sizes: 36-42



**Black Diamond**  
1403 0365 Sizes: 36-42



**Bordeaux Pearl Gewgaw**  
1403 0866 Sizes: 36-42



**Gray Square**  
1403 1151 Sizes: 36-42



**Black**  
1403 03 Sizes: 36-42



**White Butterfly**  
1403 1368 Sizes: 36-42



**Lumikki**  
Suede reinforcements



**Black**  
1404 03 Sizes: 36-42



**Bordeaux**  
1404 08 Sizes: 36-42



**White Butterfly**  
1404 1368 Sizes: 36-42



**Bordeaux Pearl Gewgaw**  
1404 0866 Sizes: 36-42

## Crosser

Velcro fastener, wide last



Black

1262 20 Sizes: 36-47



Blue

1262 19 Sizes: 36-47



Bordeaux

1262 22 Sizes: 36-47



Green

1262 21 Sizes: 36-47

## Universal

Formed insole with pile, wide last



Black

1701 03 Sizes: 35-41

1702 03 Sizes: 42-49

## Universal Pro

Formed insole with pile, wide last, snowlock



Black

1705 03 Sizes: 35-49

## Rocky

Snowlock



Black

1708 03 Sizes: 36-47

## Pallas

Suede reinforcements



Black

1703 03 Sizes: 35-41

1704 03 Sizes: 42-47

## Tuisku

Laces, suede reinforcements



Black

1922 20 Sizes: 36-42

## Tarra Tuisku

Velcro fastener, suede reinforcements



Black

1933 20 Sizes: 36-42

## Nordic

Laces, wide last



Black

1800 20 Sizes: 35-41

1801 20 Sizes: 42-47

## Walker Pro High Teddy

Pile lining, wide last



Black

1931 03 Sizes: 35-49

## Nuukio

Formed Sport- insole + extra insole, fleece lining

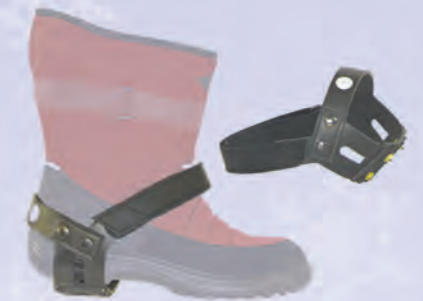


Black

1932 03 sizes: 35-47

## Shoe-Spikes

Velcro fastener



Black

520403 Sizes: S,M,L

## Patriot

Formed Sport-insole, light textile lining, nubuck with water repellent treatment, wide last



Black

1600 03 Sizes: 36-47



Red

1600 04 Sizes: 36-47



Dark Brown

1600 50 Sizes: 36-47

## Tarra Trekking

Velcro fastener, suede reinforcements, wide last



Black

1934 20 Sizes: 35-49

## Trekking

Laces, suede reinforcements, wide last



Black

1904 20 Sizes: 35-41

1902 20 Sizes: 42-49

Kuoma winter boots made of nubuck leather have changeable insole, all boots have reflective strips. Walker Pro High Teddy has PU coated split leather reinforcements.